

4238

PANTALON JOGGER MODERNE - MODERN JOGGERS

ZOOM

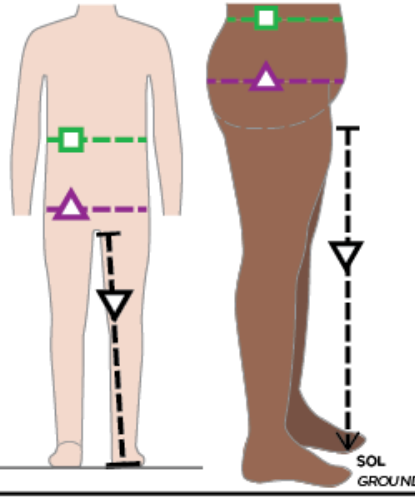
tailles - sizes

F - GG

Patron de pantalon décontracté conçu pour le tricot français (*french terry*). Modèle taille haute (arrive sur le nombril) avec élastique large à la taille, poche stylée et empiècement au dos. Découpe et bandes de poches apportant un détail stylé au devant.

Jogger pants pattern designed for French terry. High-rise cut with wide elastic waistband, back yoke to reduce bulk, and practical hip pockets. The pocket opening and band design give a unique style to the front. These jogger pants are finished with ankle cuffs.

MESURES DU CORPS (TAILLES JUNIORS) - BODY MEASUREMENTS (JUNIOR SIZES)

Âge approximatif - Approximate age	2	3	4	5	6	7	8	9	10	11	12	13	
Tailles européennes - European sizes	92	98	104	112	119	127	135	142	146	150	152	155	
TAILLE JALIE - JALIE SIZES	F	G	H	I	J	K	L	M	N	O	P	Q	
	TAILLE (PLUS FIN) WAIST (SMALLEST)	20 7/8"	21 3/8"	21 3/4"	22 1/4"	22 3/4"	23 1/8"	23 3/8"	24 1/8"	24 3/8"	25 1/8"	26 3/8"	
	HANCHES (PLUS FORT) HIPS (FULLEST)	20 7/8"	22 1/8"	23 1/4"	24 1/4"	25 1/8"	27 1/8"	28 3/8"	29 3/8"	30 3/8"	32"	33 1/4"	
	ENTREJAMBE (AU SOL) INSEAM (TO THE FLOOR)	13 3/8"	15"	16 1/2"	18 1/8"	19 1/8"	21 1/8"	23 1/8"	24 1/8"	25"	27"	28 1/8"	29 1/8"
TISSU REQUIS - YARDAGE													
58" 147 cm	PANTALON PANTS	3/4 yd 0.50 m	3/4 yd 0.55 m	3/4 yd 0.60 m	1 yd 0.70 m	1 yd 0.80 m	1 yd 0.85 m	1 yd 0.90 m	1 1/4 yd 0.95 m	1 1/2 yd 1.15 m	1 1/2 yd 1.15 m	1 1/2 yd 1.20 m	1 1/2 yd 1.30 m
	EMPIÈCEMENT CONTRASTANT CONTRAST YOKE	1/4 yd 0.20 m	1/4 yd 0.20 m	1/4 yd 0.20 m	1/4 yd 0.20 m	1/4 yd 0.20 m	1/2 yd 0.25 m	1/2 yd 0.25 m	1/2 yd 0.25 m	1/2 yd 0.25 m	1/2 yd 0.25 m	1/2 yd 0.25 m	1/2 yd 0.25 m

Choisir la taille Jalie (lettre) qui correspond aux hanches.
Choose the size closest to the hips measurement.

MESURES DU CORPS (TAILLES ADULTES) - BODY MEASUREMENTS (ADULT SIZES)

Prêt-à-porter APPROX. US size	XS (4)		S (6-8)		M (8-10)		L (12-14)		XL (16-18)		1X (18-20)		2X (22-24)			
Tailles euro - European sizes	34	36	38	40	42	44	46	48	50	52	54	56				
TAILLE JALIE - JALIE SIZES	R	S	T	U	V	W	X	Y	Z	AA	BB	CC	DD	EE	FF	GG
TAILLE (PLUS FIN) WAIST (SMALLEST)	27 3/8"	28"	28 3/8"	29 1/8"	30 3/8"	31 1/8"	32 1/8"	33 1/8"	35 1/8"	36 3/8"	38 3/8"	40"	41 1/8"	43"	44 1/8"	46 1/8"
HANCHES (PLUS FORT) HIPS (FULLEST)	35 3/8"	37"	38"	39"	40"	41"	41 1/8"	42 1/8"	44 1/8"	45 3/8"	47"	48 3/8"	49 1/8"	51 1/8"	52 1/8"	53 1/8"
ENTREJAMBE (AU SOL) INSEAM (TO THE FLOOR)	30 3/8"	31 1/2"	31 1/2"	31 1/2"	31 1/2"	31 1/2"	31 1/2"	31 1/2"	31 1/2"	31 1/2"	30 3/8"	30 3/8"	30 3/8"	30 3/8"	30 3/8"	29 3/8"
TISSU REQUIS - YARDAGE																
58" 147 cm	PANTALON PANTS	1 1/2 yd 1.35 m	1 3/4 yd 1.45 m	1 3/4 yd 1.50 m	1 3/4 yd 1.55 m	1 3/4 yd 1.55 m	1 3/4 yd 1.55 m	1 3/4 yd 1.60 m	1 3/4 yd 1.60 m	2 yd 1.65 m	2 yd 1.65 m	2 yd 1.70 m	2 yd 1.70 m	2 1/4 yd 1.85 m	2 1/2 yd 2.05 m	2 1/2 yd 2.20 m
	EMPIÈCEMENT CONTRASTANT CONTRAST YOKE	1/2 yd 0.25 m	1/2 yd 0.25 m	1/2 yd 0.30 m	1/2 yd 0.30 m	1/2 yd 0.30 m	1/2 yd 0.30 m	1/2 yd 0.30 m	1/2 yd 0.30 m	1/2 yd 0.30 m	1/2 yd 0.30 m	1/2 yd 0.30 m	1/2 yd 0.30 m	1/2 yd 0.30 m	1/2 yd 0.30 m	1/2 yd 0.30 m

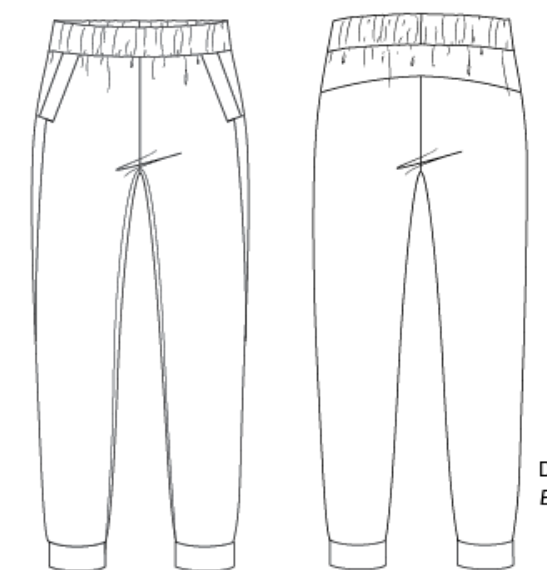
EXTENSIBILITÉ MINIMALE REQUISE (dans la largeur et la longueur)
MINIMUM STRETCH REQUIRED (in width and length) **30%**

10 cm → 13 cm
(4" → 5 1/8")

TISSUS RECOMMANDÉ
RECOMMENDED FABRICS

Tricot moyen ou léger avec spandex et au moins 30% d'extensibilité dans la largeur ET la longueur (tricot français, tricot de polyester, tricot athlétique).

Light- or medium-weight knit with spandex with at least 30% stretch in the width AND length (French terry, polyester knit, athletic knit) recommended.

DOS
BACK

MERCERIE - NOTIONS

ÉLASTIQUE 32 mm - 1 1/4" ELASTIC

F - I 55 cm (21")

ÉLASTIQUE 38 mm - 1 1/2" ELASTIC

J - P 65 cm (25")

ÉLASTIQUE 50 mm - 2" ELASTIC

Q - X 85 cm (32")

Y - GG 110 cm (43")

PRÊT À COUDRE // READY TO SEW
Valeurs de couture de 6 mm (1/4") incluses dans le patron
6 mm (1/4") seam allowances included in the pattern



4004238

Jalie
PATRONS DE COUTURE
DESIGN PATTERNS

© 2022 LES PATRONS JALIE INC.
www.jalie.com
IMPRIMÉ AU CANADA / PRINTED IN CANADA